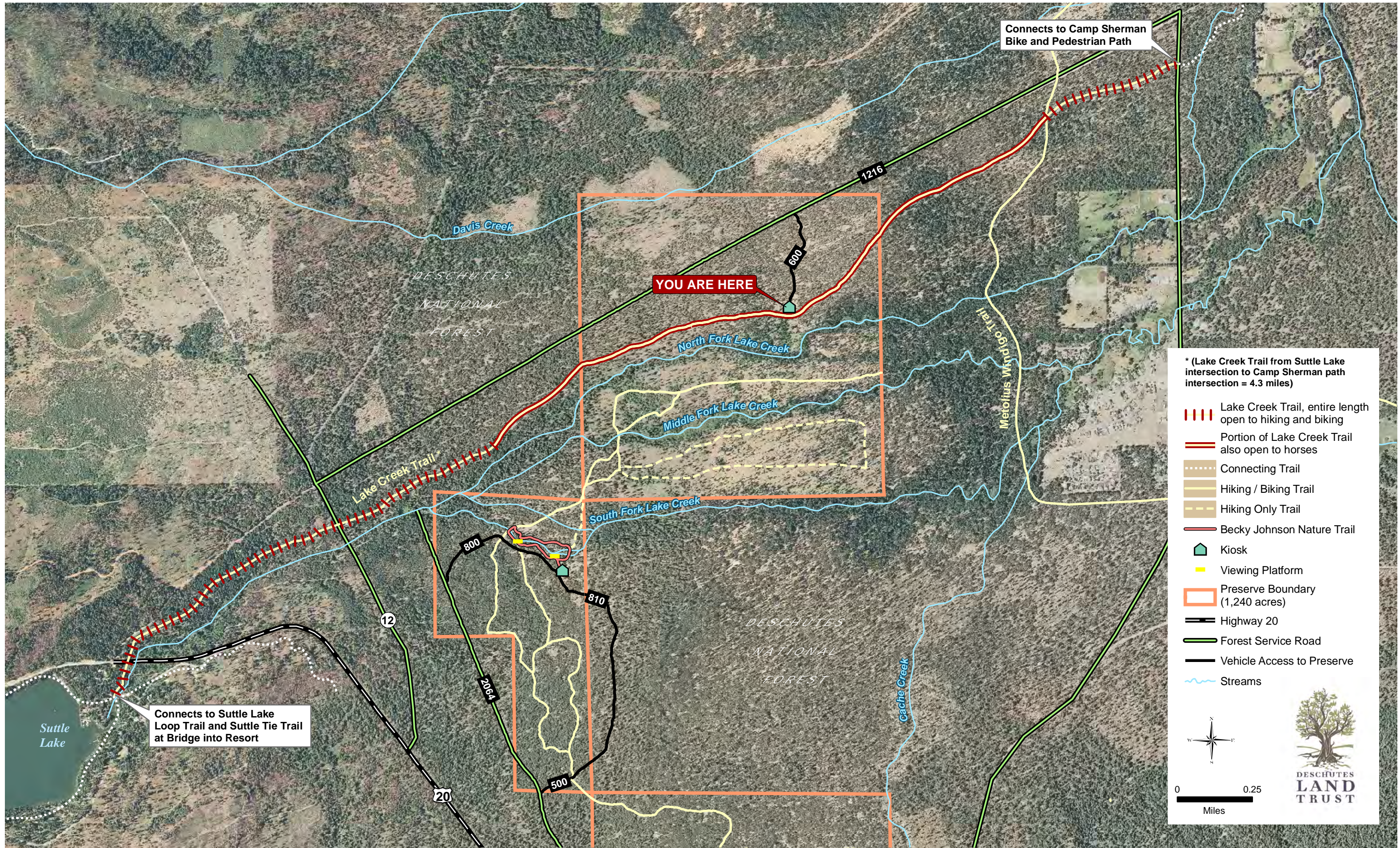


Lake Creek Trail through the Metolius Preserve



* (Lake Creek Trail from Suttle Lake intersection to Camp Sherman path intersection = 4.3 miles)

- Lake Creek Trail, entire length open to hiking and biking
- Portion of Lake Creek Trail also open to horses
- Connecting Trail
- Hiking / Biking Trail
- Hiking Only Trail
- Becky Johnson Nature Trail
- Kiosk
- Viewing Platform
- Preserve Boundary (1,240 acres)
- Highway 20
- Forest Service Road
- Vehicle Access to Preserve
- Streams

0 0.25
Miles

DESCHUTES
LAND
TRUST