

Driving Directions to Whychus Canyon Preserve

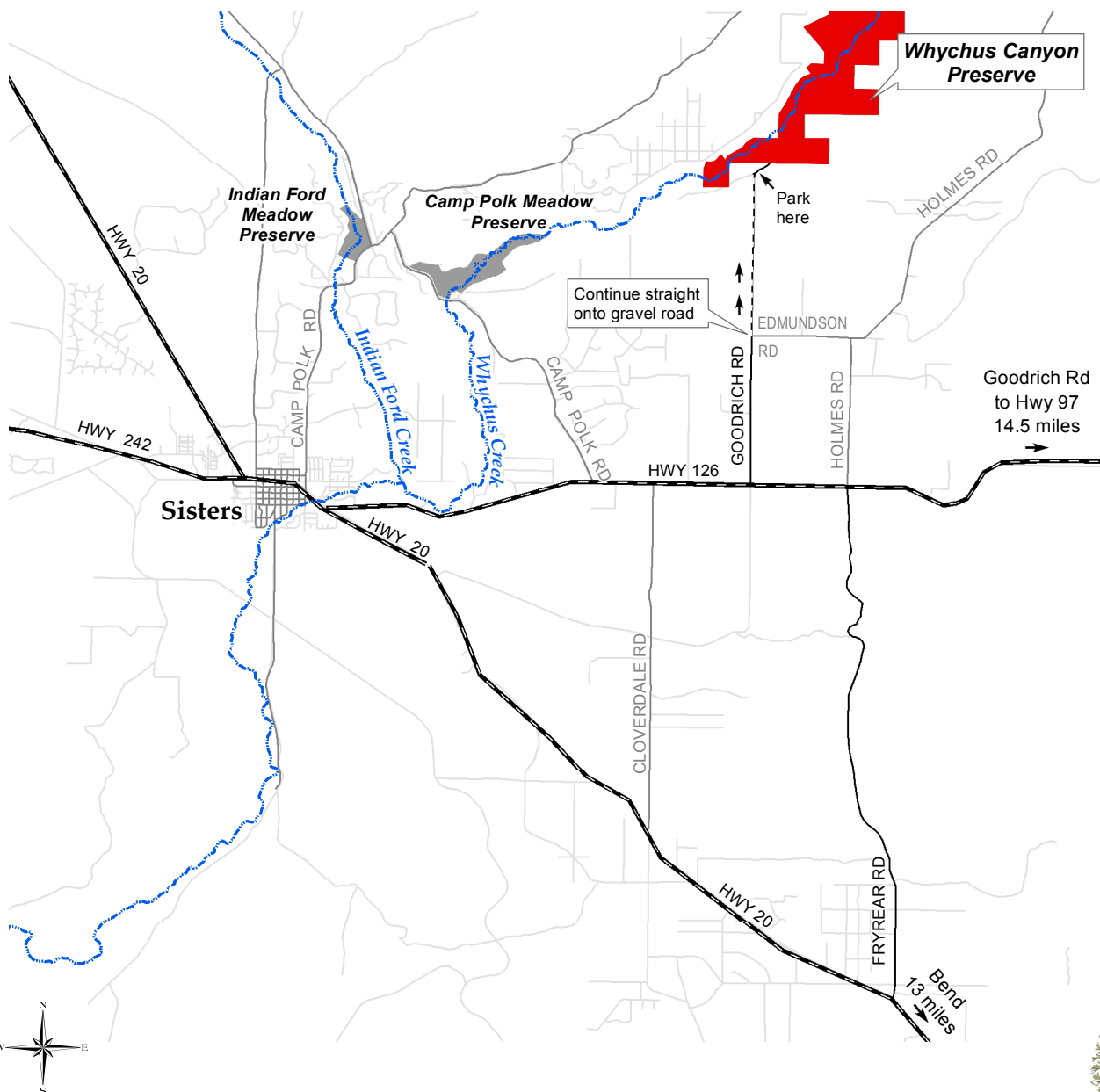
Whychus Canyon Preserve kiosk coordinates (UTM NAD83): 623319, 4910477

From Bend:

Drive northwest on Hwy 20 for approximately 13 miles. Turn north on Fryrear Road and continue 5.5 miles to intersection with Hwy 126. Turn left on Hwy 126 for 1 mile, then turn right on Goodrich Road. Follow Goodrich Road for 1.5 miles until the paved road begins to curve sharply to the right. Continue straight at the curve onto a gravel road and follow this road 1.3 miles north to a split in the road. You'll see a Preserve welcome sign straight ahead. Continue north for another 0.4 miles to the kiosk and parking area.

From Sisters:

Drive east from Sisters on Hwy 126 for approximately 5.4 miles. Turn left on Goodrich Road. Follow Goodrich Road for 1.5 miles until the paved road begins to curve sharply to the right. Continue straight at the curve onto a gravel road and follow this road 1.3 miles north to a split in the road. You'll see a Preserve welcome sign straight ahead. Continue north for another 0.4 miles to the kiosk and parking area.



0 1 2 Miles

