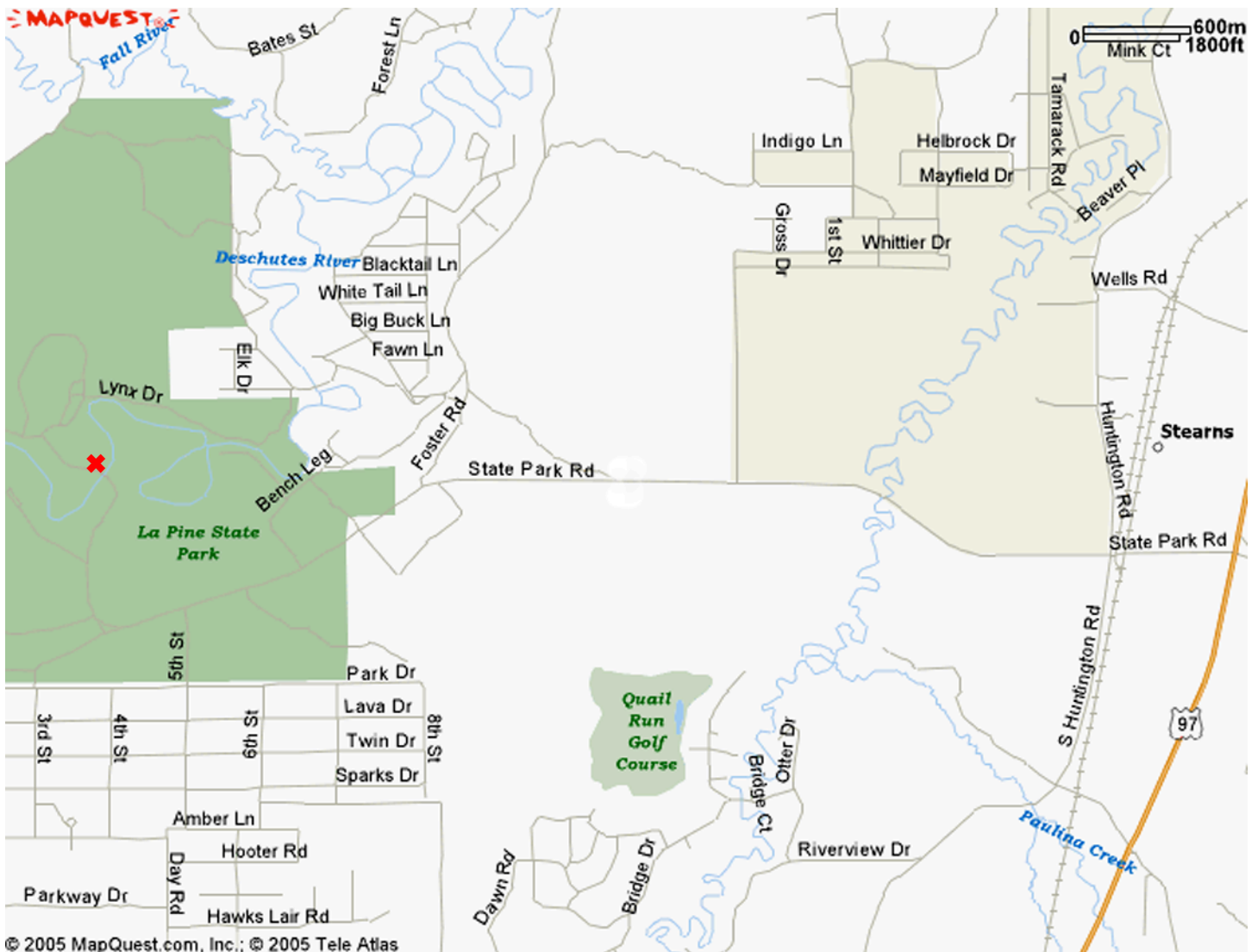


DESCHUTES LAND TRUST
2014 THOMAS PRESERVE PADDLE
SEPTEMBER 26, 9AM-2PM

Thanks for joining the Land Trust for our annual float to the Thomas Preserve! The Land Trust provides the people shuttle for the trip, but you need to get your boat and your car to the right place that morning. Please plan on following:

1. Drop your boats (and any extra people) at La Pine State Park **by 9:00 a.m.**
2. Drive vehicles to Big River Campground boat launch before 9:45 am to catch the people shuttle that **LEAVES at 9:45 a.m.**
3. Bring boat, PFD, whistle, lunch, water, sunscreen, water sandals, insect repellent, and your *Aquatic Invasive Species Prevention Permit* (one per boat 10 ft or more, buy them online here):
http://www.dfw.state.or.us/conservationstrategy/invasive_species/quagga_zebra_mussel.asp ,
4. We will take out at Big River campground boat ramp around 2:00 p.m.
5. Driving times:
 - Bend to La Pine State Park: 26 miles, 36 minutes
 - State Park to Big River: 15 minutes
6. Driving directions follow.

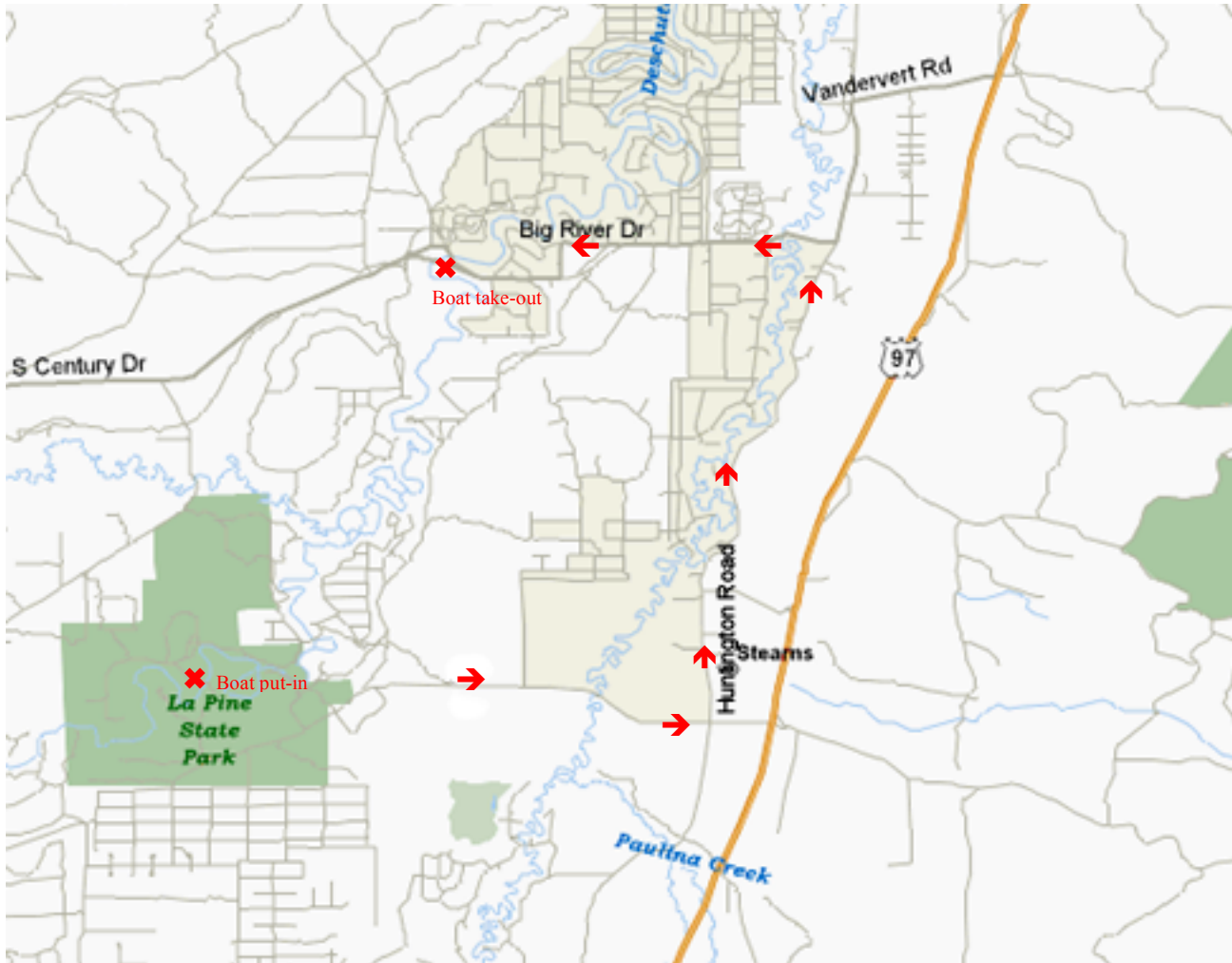
DESCHUTES LAND TRUST
2014 THOMAS PRESERVE PADDLE
SEPTEMBER 26, 9AM-2PM



BOAT DROP OFF: LA PINE STATE PARK BOAT RAMP

Take Highway 97 South past Vandervert Road. Look for signs for La Pine State Park. Turn right onto State Park Road. Continue on State Park Road until you reach La Pine State Park. Stay on the main park road. Continue driving past the turnoff for the Day-Use area. You will cross the Deschutes River. Turn right on the first gravel road just past the bridge. Look for the Land Trust sign or staff at this intersection. **Please drop your boats off around 9:00 am and then take your car to the take out point at Big River Campground boat ramp. The shuttle will leave Big River at 9:45 am to return to the launch.**

DESCHUTES LAND TRUST
2014 THOMAS PRESERVE PADDLE
SEPTEMBER 26, 9AM-2PM



CAR PARK & TAKE OUT POINT: BIG RIVER CAMPGROUND BOAT RAMP

To get to Big River Campground boat ramp from La Pine State Park, get back on State Park Road. Drive approximately 3 ½ miles and turn left onto Huntington Road. Drive 3.9 miles until you reach the intersection of South Century Drive. Turn left on South Century Drive. Continue approximately 2.7 miles and look for Big River Campground Boat Ramp on your right. Look for Land Trust signs/people.

The shuttle will LEAVE the Big River campground boat ramp at 9:45 am to take folks back to the launch point for the trip.